

WYWM Data Pathway

WYWM Data Pathway

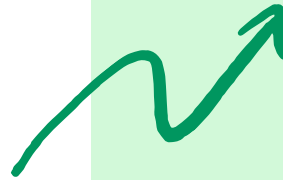


DATA

What is it about?

At its core, data analytics is all about solving problems using data.

This course will help you understand how to clean and transform raw data into actionable insights that can be used to solve business problems and enable informed decision-making.



The background features a dark blue and black gradient with various data visualization elements. On the left, there are vertical blue bars of varying heights. In the center and right, there are faint line graphs with grid lines. Large, semi-transparent numbers like '1500', '45', and '10' are scattered across the background. A purple arrow points from the text area towards the list on the right.

WYWM

Data courses

- **Data Foundations**
- **Data Analysis with Excel**
- **Data Visualisation with Power BI**
- **Data Visualisation with Tableau**
- **SQL for Data Analysis and Development**
- **Introduction to Data Engineering**

Data Foundations

Learning objectives

This is the first in a three-part course series comprising of Data Foundations, Data Analysis with Excel and Data Visualisation with PowerBI.

In this course, you'll learn how to:

- Plot and optimise graphs using visualisation principles
- Interpret basic descriptive statistics
- Understand and plot frequency distributions
- Use and adapt pivot tables
- Understand variants and measures of central tendency
- Understand misleading statistics and how to avoid them

Prerequisites:	Nil
Course Hours:	20-30 hrs
Assessments:	Formative Quizzes
Difficulty:	Beginner



Data Analysis with Excel

Learning objectives

The course will provide you with the core skills required to transform unprocessed data into insights that enable decision making.

With the mantra 'learn by doing', this course teaches the fundamentals of data analysis through interactive and practical content.

You will walk away from the course with the ability to apply statistical analysis to real-world problems using Excel.

Prerequisites:	Data Foundations
Course Hours:	40-50 hrs
Assessments:	Quizzes & Graded Assessment
Difficulty:	Intermediate



Data Visualisation with Power BI

Learning objectives

The Data Visualisation with Power BI course will empower you with the core skills required to transform data into visualisations that reveal insights and enable decision making.

With the mantra 'learn by doing', this course teaches the fundamentals of data visualisation through interactive and practical content.

Prerequisites:	Data Foundations Data Analysis with Excel
Course Hours:	20-30 hrs
Assessments:	Quizzes & Assessment
Difficulty:	Intermediate



Data Visualisation with Tableau

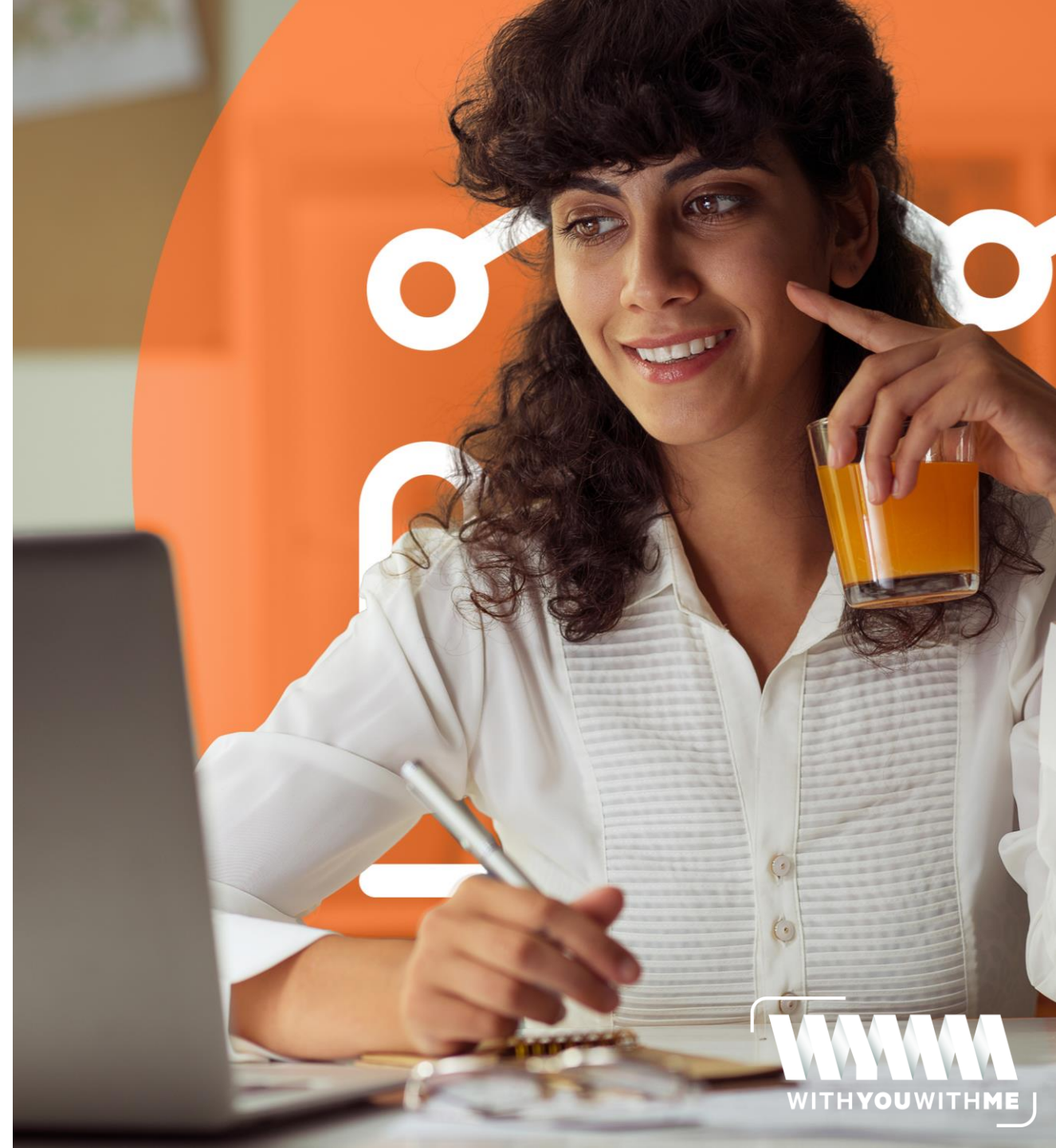
Learning objectives

The Data Visualisation with Tableau course empowers students with the skills required to visualise data and enable decision-making using Tableau.

In this course, student will learn:

- Building visualisations and dashboards in Tableau
- Analysis over time and in-table calculations
- Correlation, including correlation plots and scatter charts
- Storytelling with data

Prerequisites:	Data Foundations Data Analysis with Excel
Course Hours:	30-50 hrs
Assessments:	Quizzes & Assessment
Difficulty:	Intermediate



SQL for Data Analysis and Development

Learning objectives

This course introduces using structured query language (SQL) for data analysis and software development in an interactive environment.

Prerequisites:	Data Analysis with Excel recommended
Course Hours:	20-30 hrs
Assessments:	Formative Assessment Tasks
Difficulty:	Intermediate



Introduction to Data Engineering

Learning objectives

This course is for those interested in pursuing the software engineering side of data. In large organisations, data doesn't come in a single excel spreadsheet or CSV. Databases tend to consist of complicated models of data tables and their relationships. Data Engineers choose how to structure data within an organisation.

In this course you will learn:

- The language of data engineering
- The basics of databases and how they are managed
- The basics of data modelling
- Common issues encountered by data engineers

Prerequisites:

Data Visualisation with Power BI (recommended)

Course Hours:

20-30hrs

Assessments:

Quizzes & Assessment

Difficulty:

Intermediate





Ready to learn?

Start training for free today

Start your training now

We have thousands of hours and multiple digital learning pathways you can access whenever, wherever for free. Whether you want to upskill for a new role, advance your current career with continuous development or simply learn a new skill out of curiosity, our digital skills training is free for the under-represented communities we support.

Sign up now